



## FAA PAEDIATRIC FIRST AID

**2 DAY COURSE**

**RQF LEVEL 3 AWARD**

**The course will cover:**

**Unit 1** - Emergency Paediatric First Aid (Credit 1) Unit code K/615/4246

**Unit 2** - Managing Paediatric Illness, Injury and Emergencies (Credit 2)  
Unit code M/615/4247

The qualification is designed for learners with a responsibility for the care of children and babies on a professional level. The purpose of the qualification is for the learner to attain the knowledge and practical competence required to deal with a range of paediatric first aid situations.

### **Ofsted and the Early Years Foundation Stage**

This 2 day qualification fulfils the requirements for first aid training detailed in the Department for Education's statutory framework for the Early Years Foundation Stage.

**Duration** - Contact hours for direct classroom teaching and assessment must be no less than 12 hours over 2 days.

**Syllabus** - A range of subjects are covered including:

- Role of the Paediatric First Aider
- Primary survey
- Resuscitation (CPR including the safe use of an AED)
- Wounds, bleeding and shock
- Allergic reactions including anaphylaxis
- Head, neck and back injuries
- Seizure and Febrile convulsions
- Choking
- Minor injuries
- Fractures
- Foreign bodies
- Asthma
- Meningitis
- Extreme cold & heat
- Electric incidents



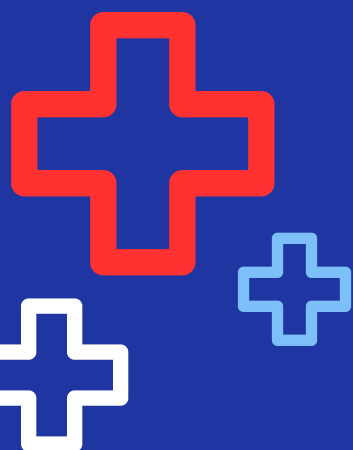
**Certification** - The qualification is valid for 3 years from the date of achievement. It is recommended that the learner attends annual refresher training. The learner will need to complete the full course again to requalify for a further 3 years.

Ofqual Regulated

## HOW TO APPLY

Please contact school as soon as possible, we operate a first come, first served basis.

- Telephone: 01772 782205
- Email: [hillside@hillside.lancs.sch.uk](mailto:hillside@hillside.lancs.sch.uk)



**Cost: £145**

**When & Where:**

**2024**

3rd & 4th July

25th & 26th September

27th & 28th November

**2025**

5th & 6th February

12th & 13th March

14th & 15th May

9th & 10th July

**9am-3.30pm**

**Hothersall Suite at  
Hillside**

Refreshments will be provided. Please bring a packed lunch

**Please note:** This venue is accessed via stairs. If this will present any difficulties for you, please let us know

